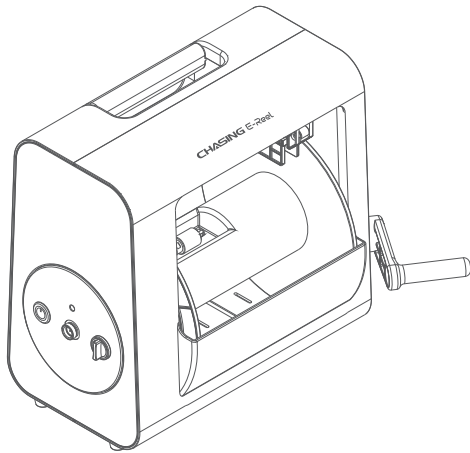


# CHASING E-Reel

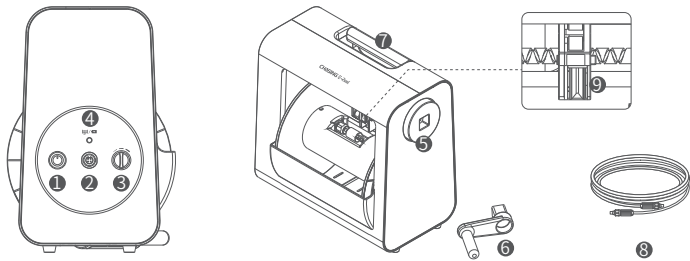
## Manual

V1.0

The E-Reel has 14 specialized stainless steel bearings, which adopts high precision aluminum alloy synchronous belt to drive and high quality stainless steel reciprocating lead-screw line anti-blast technology. Up to 200 meters of tether. E-Reel offers 4800mAh large capacity battery, which is up to 30 retracting cycles. E-Reel also supports manual rocker retracting to discharge line, and allows single person operation and quick-deployment. Let you get rid of the trouble of manual winding and enjoy the underwater exploration.



### E-Reel



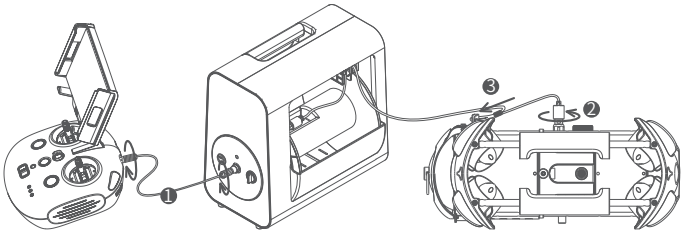
1. Power switch
2. Tether / charging socket
3. Speed knob: stop/slow/fast
4. Power indicator: Green 100%-60%;Yellow 59%-20%;Red 19%-0%;  
The indicator flashes when the motor is running
5. Handle interface
6. Handle
7. Lifting handle
8. 3 meters tether: Used for connecting the remote controller and the E-Reel
9. straightener

### Specifications

SIZE	280*150*270
WEIGHT	2.9kg
MAX STORAGE LENGTH	200 meters
BATTERY CAPACITY	4800mAh
NUMBER OF CYCLES	>300 times
RUNTIME	30 times
WIPING SPEED	3 gears
TAKE-UP SPEED (200m)	Fast Speed 200s ; Low Speed 9min
OPERATING TEMPERATURE	-10°C~45°C
CHARGING TIME	2H (2.9A) /3.5H (1.5A)
* Note: Charging time varies by environmental factors, actual results will vary.	

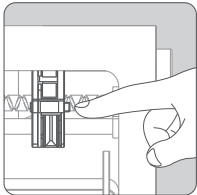
### Connection

1. Connect the 3 meters tether to the E-Reel and Remote Controller.
2. Connect the tether of the E-Reel to the ROV tether socket and tighten the nut.
3. Reserve a suitable length and hang the tether sleeve on the tail safety buckle and tighten it.

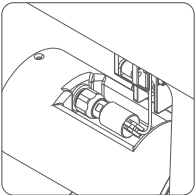


### Instructions

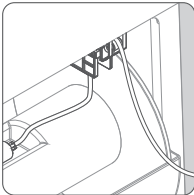
#### 1) Install



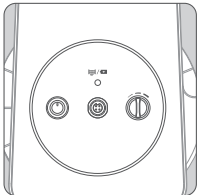
Press the button on the right side of the straightener to open the lid.



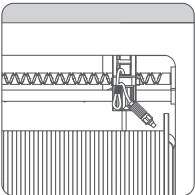
Insert the tether plug into the groove interface of the E-Reel and tighten the nut.



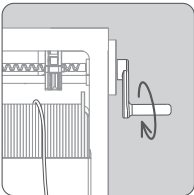
Install the tether into the straightener and close the lid.



turn on the switch, rotate the speed switch to slow/fast speed and start winding.

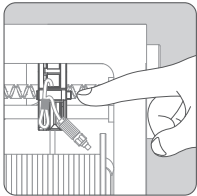


Finishing.



In the case that the winder is out of power, you can use the manual handle for rewinding.

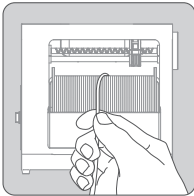
#### 2) Wind Down



Press the button on the right side of the straightener to open the lid.

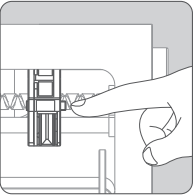


Take out the tether from the straightener.

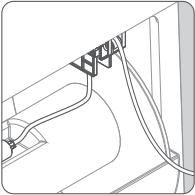


Close the lid, Start to wind down the tether by hand.

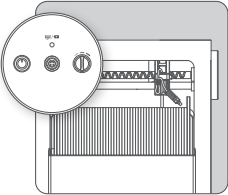
#### 3) Wind Up



Press the button on the right side of the straightener to open the lid.



Install the tether into the straightener, as shown in the picture. Close the lid of the straightener.



turn on the switch, rotate the speed switch to slow/fast speed and start winding.

### Charging Guidance

Adapter (25.2V 1.5/2.9A) : It could charge the Remote Controller and E-Reel. Red light indicates Charging, green light indicates full charged.

### Precautions

1. You need to wait 4 seconds when you turn on the power for the first time and rotate the speed knob to slow/fast gear.
2. When there is explosion wire, you should turn off the power immediately, finishing after getting tether organized.
3. When the winding is almost complete, please adjust to a slow speed in advance. After winding up, please timely adjust to the closing gear and turn off the power.
4. Check if the O-rings on the tether connectors are dropped or damaged. If there are missing or damaged, please replace them in time.
5. Please pay attention to hold the E-Reel in the process of wire winding up or down.
6. E-Reel supports IP65 class waterproofing. Do not put the E-Reel in the water or splash liquid on it. E-Reel water damage is out of warranty.